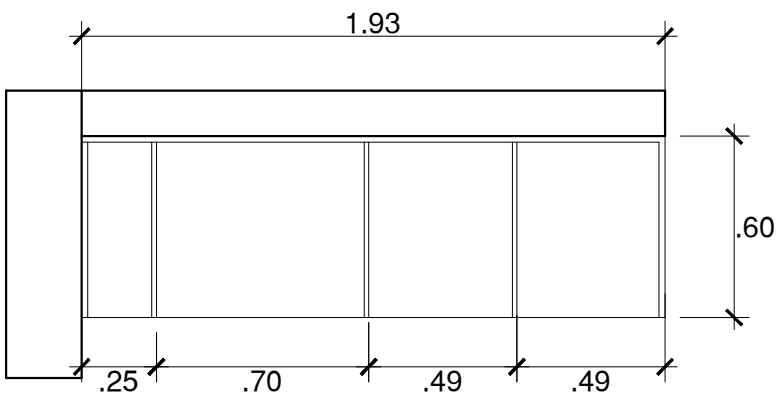
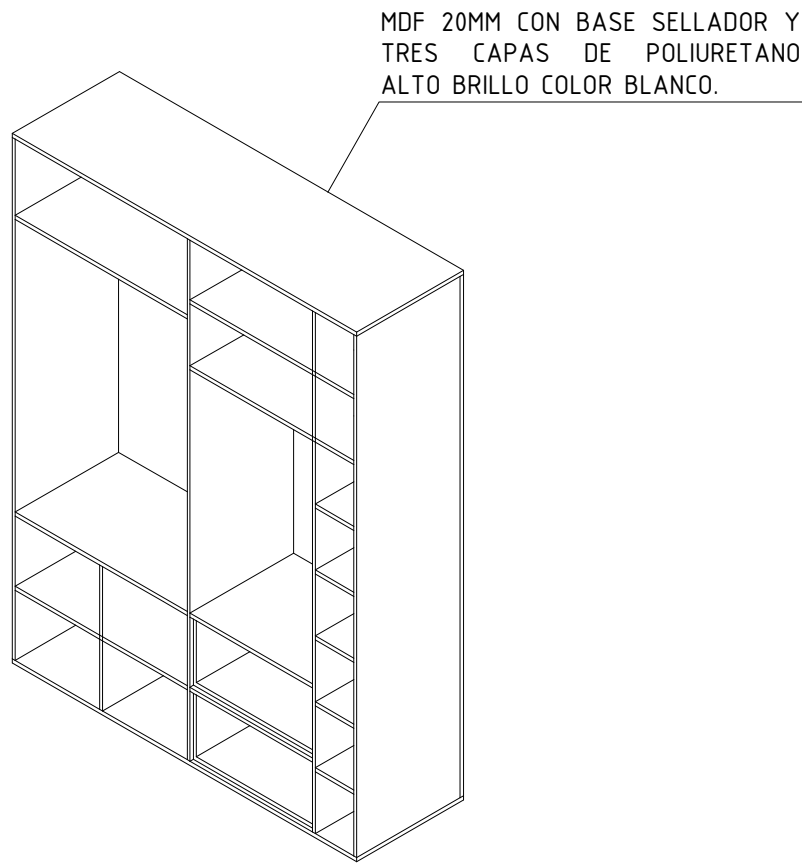
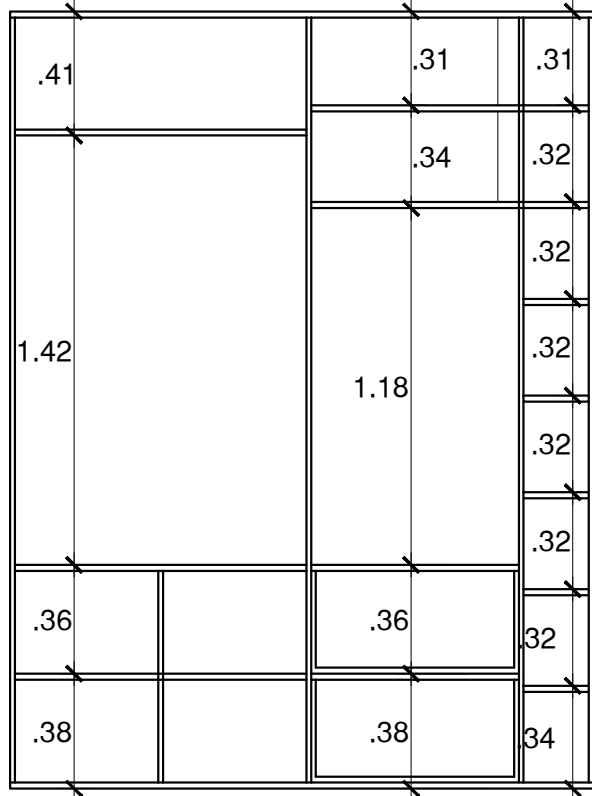


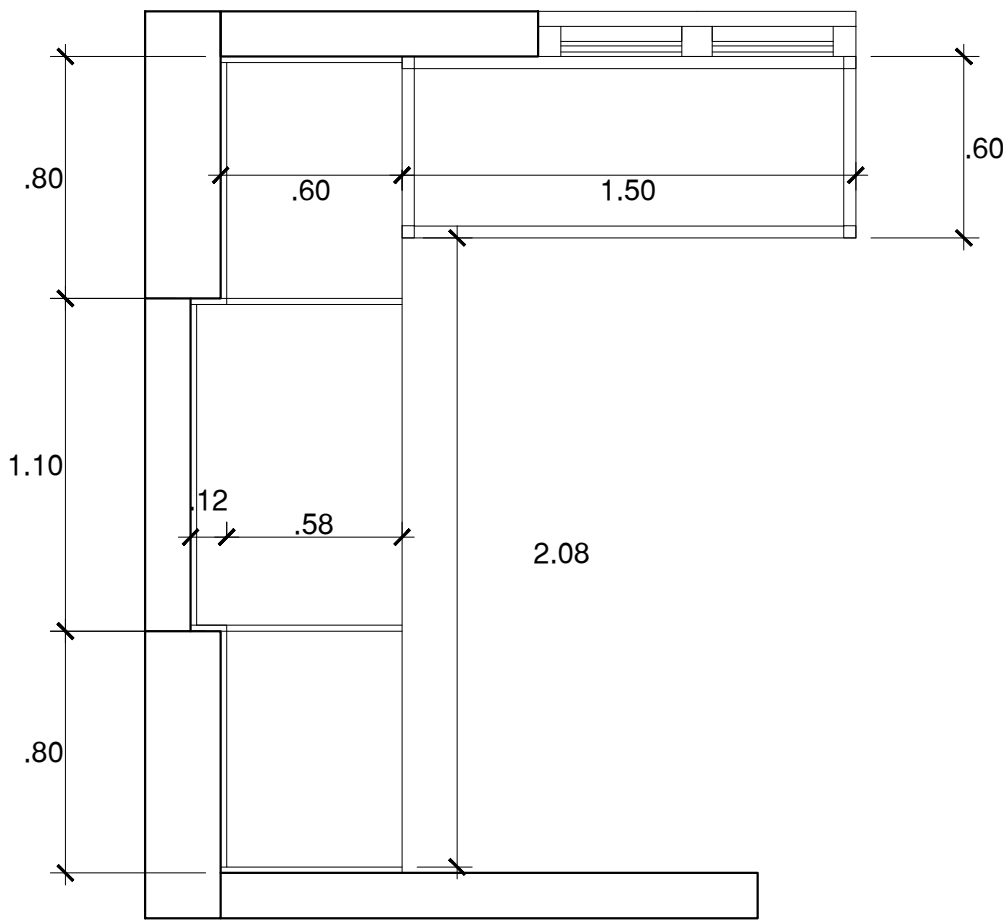
PLANTA C12



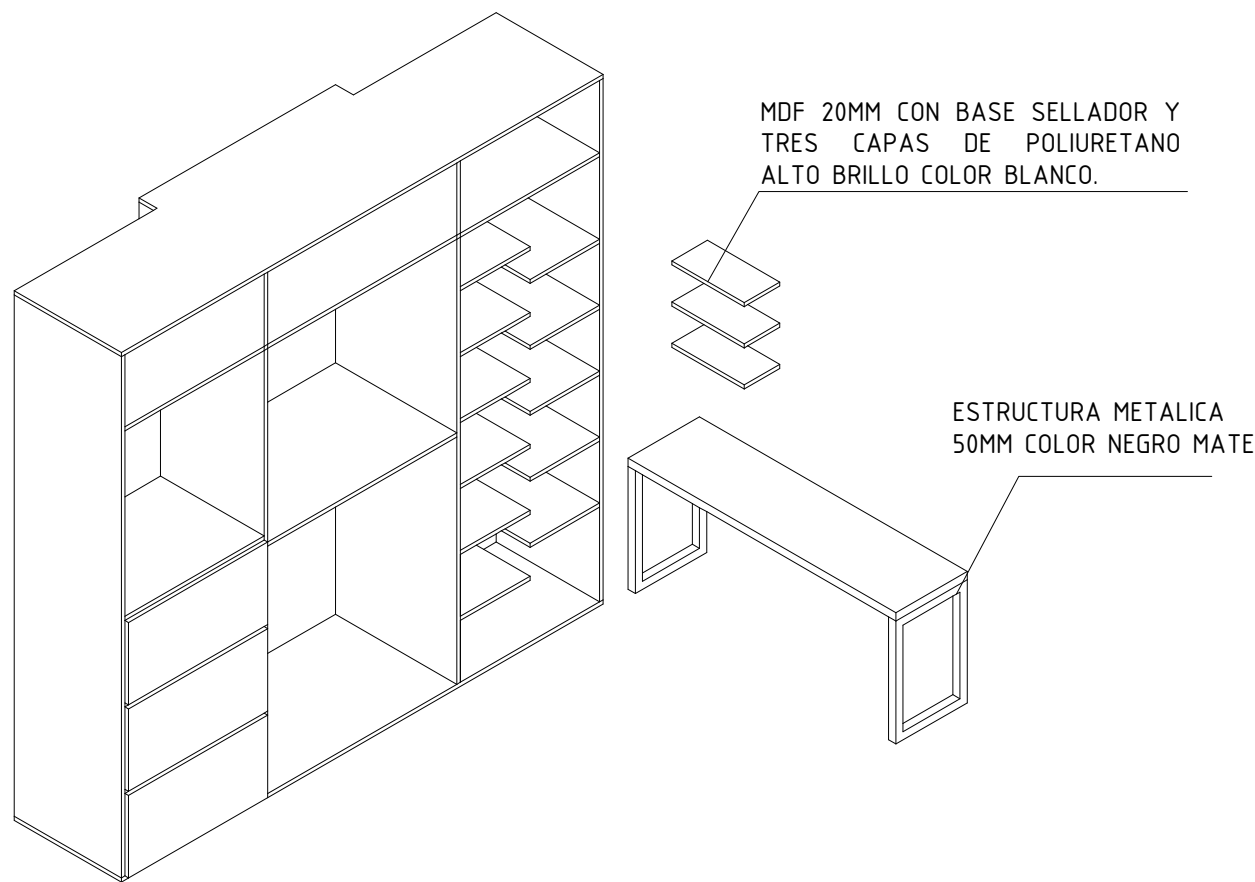
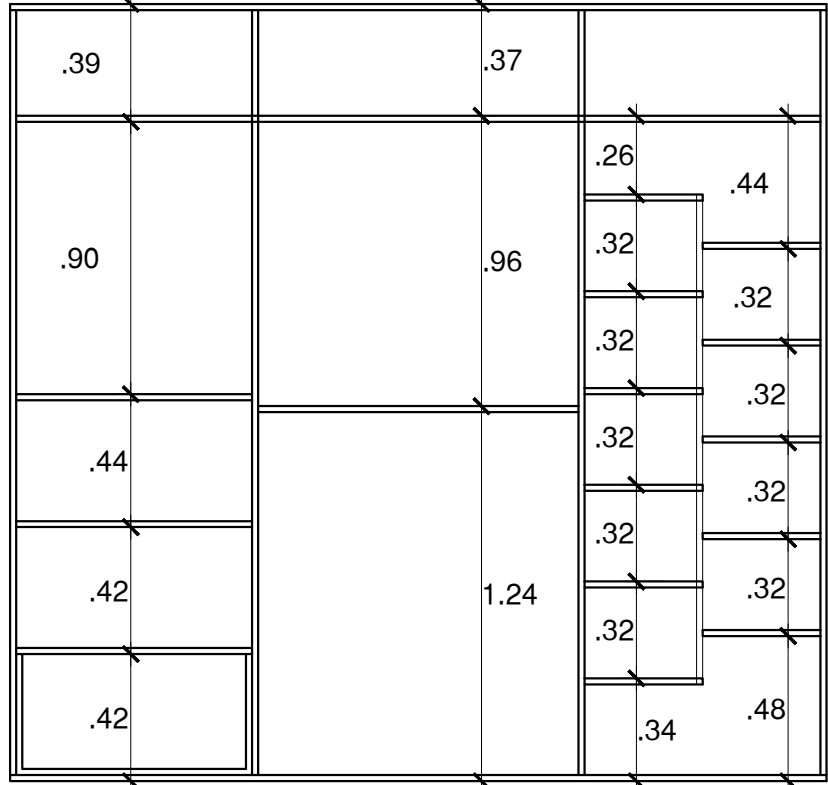
CORTE C12



PLANTA C13

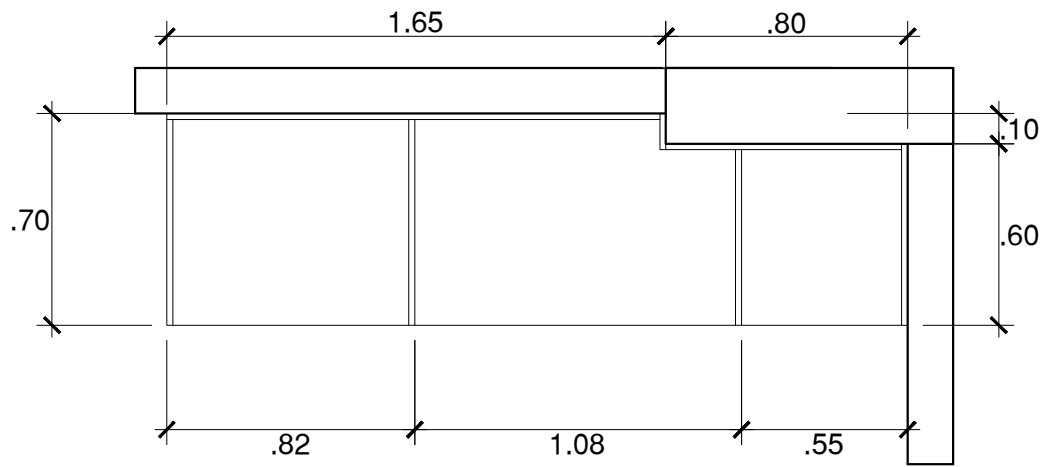


CORTE C13

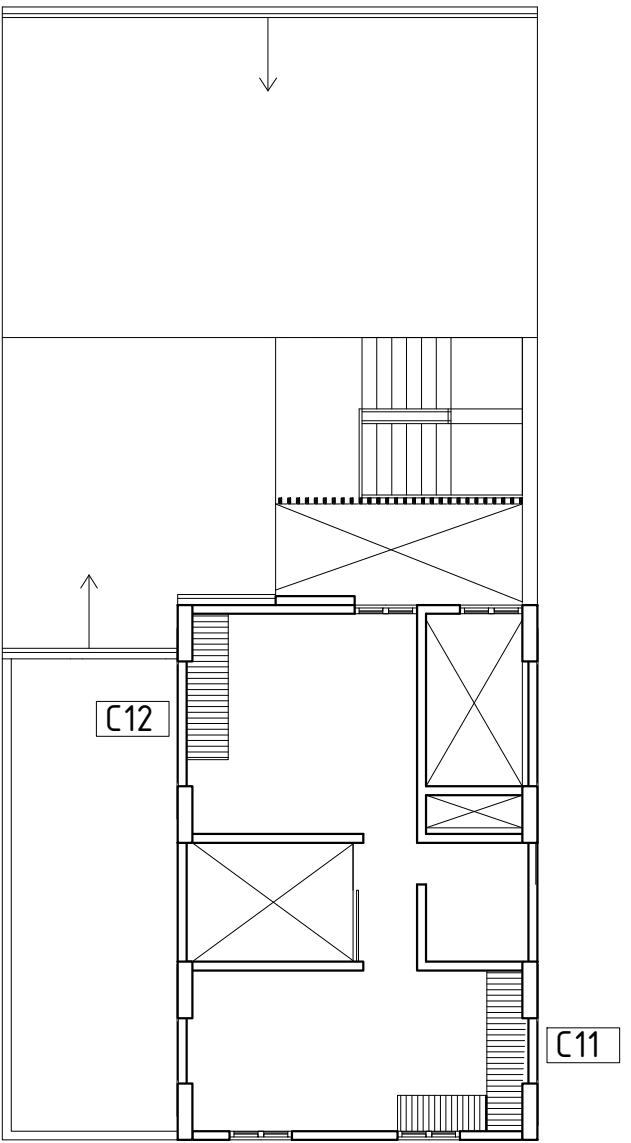
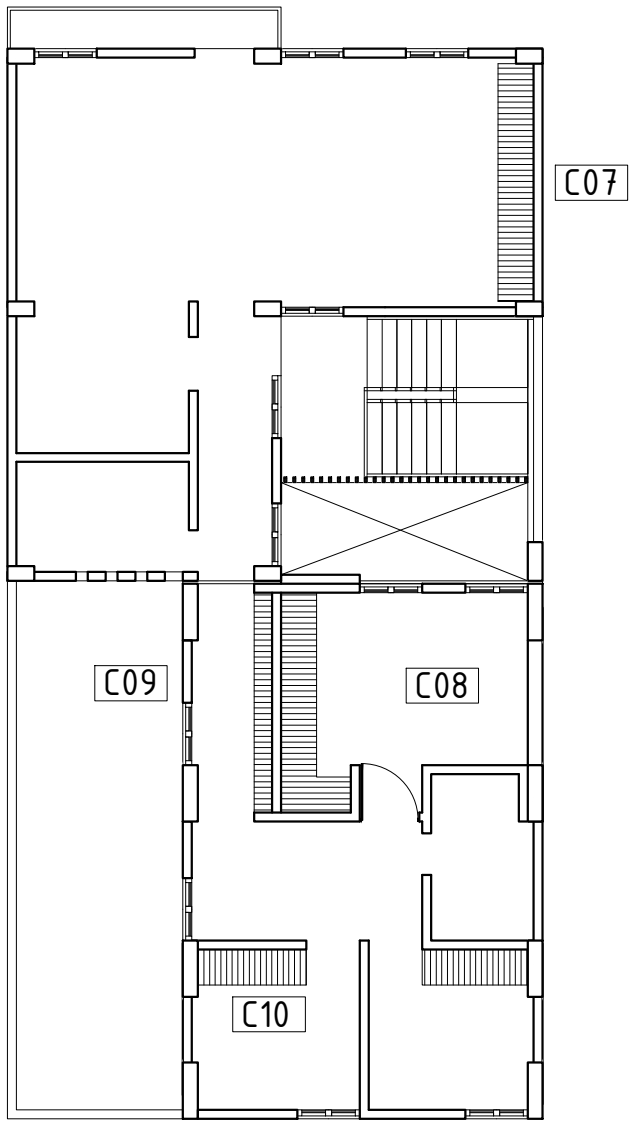
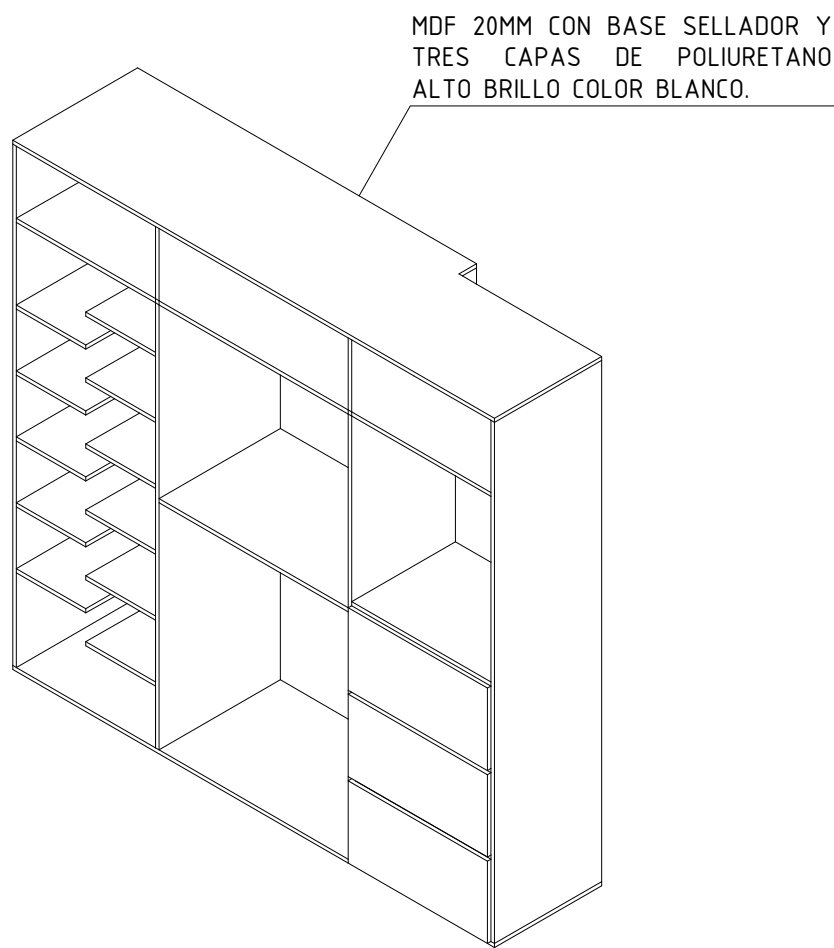
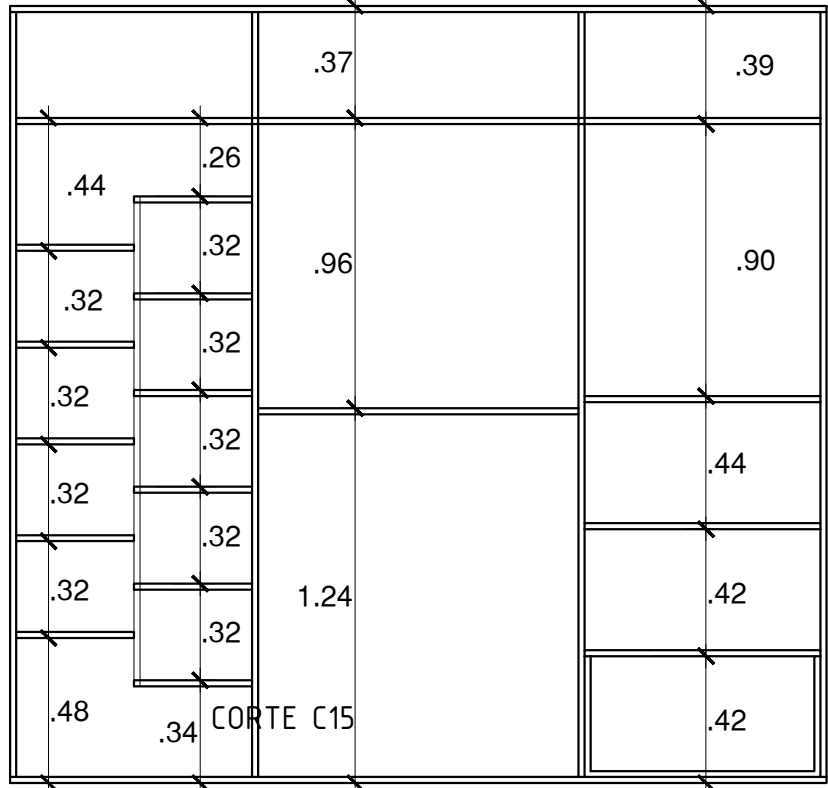


PLANTA C14

PLANTA C15



CORTE C14



PROYECTO:
VIVIENDAS PRODUCTIVAS
Y PROCESADORA DE TRUCHA
HUARÁZ

ALUMNA:
VELÁSQUEZ LÓPEZ MARGARITA T.

DESCRIPCION:
**DETALLE DE MUEBLES
VIVIENDA TIPO B**

ESCALA:
1/25

FECHA:
JULIO 2021

PROFESIONAL RESPONSABLE:
ARQ. JORGE COSMÓPOLIS BULLÓN
ING. TOMAS CARRASCO ORELLANO
ING. LUIS ALBERTO RAMOS MARTINEZ
ING. JOSE CARLOS YAFAC RISCO